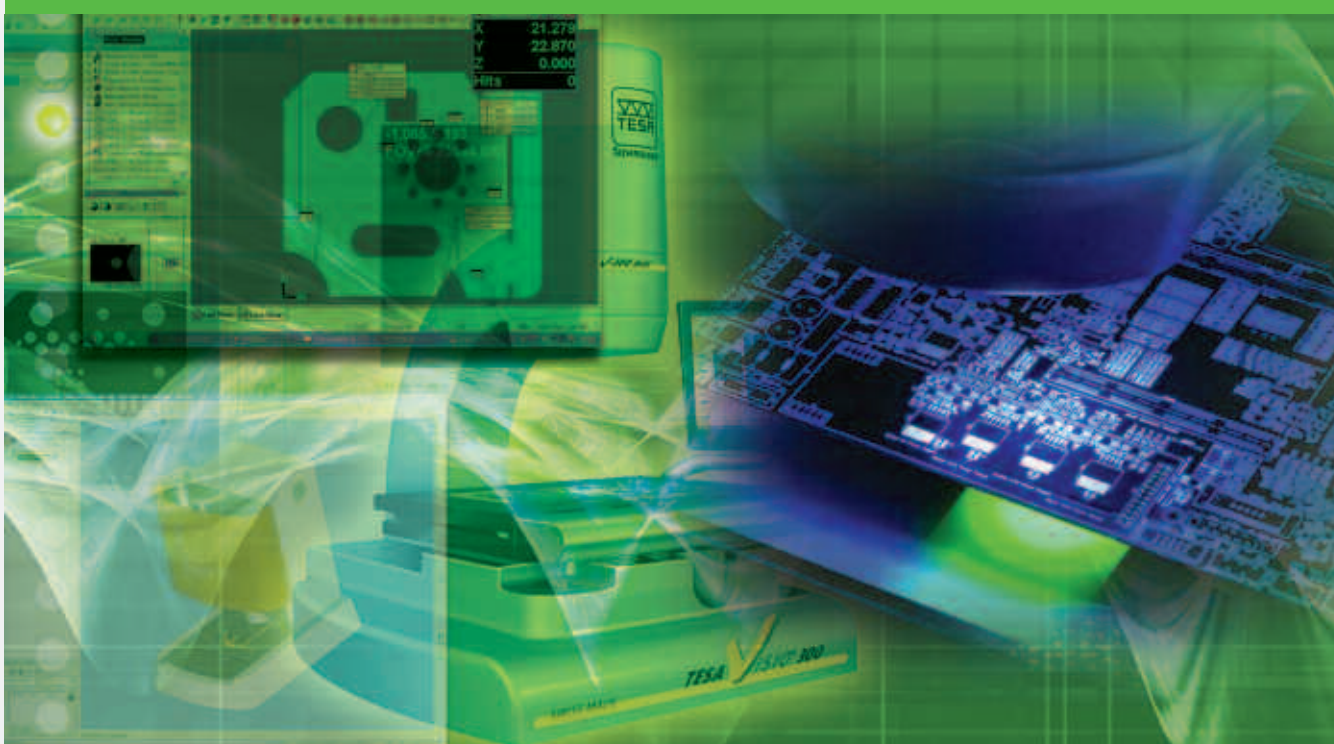


pc·dmis[®] *VISION*



A New Take On Vision Metrology



PC-DMIS® Vision

A New Take On Vision Metrology

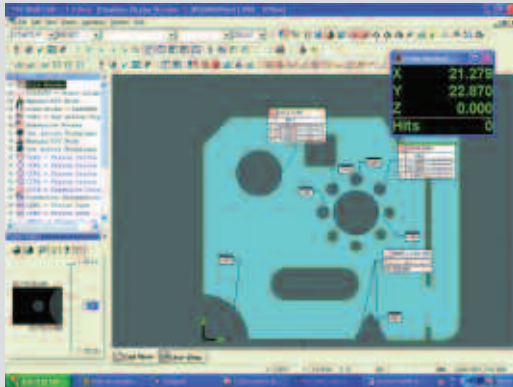
Bringing the power of PC-DMIS to Vision Measurement

Wilcox Associates has long set the standard for CAD-based, CMM software. Now, PC-DMIS Vision system brings these same tools and powerful new ones to the job of programming and inspecting parts on vision measurement machines.

Vision metrologists now have the same capabilities long available to users of PC-DMIS CMM. In addition, because PC-DMIS Vision is a part of the Enterprise Metrology Solutions (EMS) family of software products, users have access to a wide range of additional analytical and reporting capabilities not available on competitive packages.

CAD into Vision

PC-DMIS was the first CMM package to integrate CAD into the inspection process. Now with PC-DMIS Vision, Wilcox Associate brings this fundamental capability to the unique demands of vision metrology.



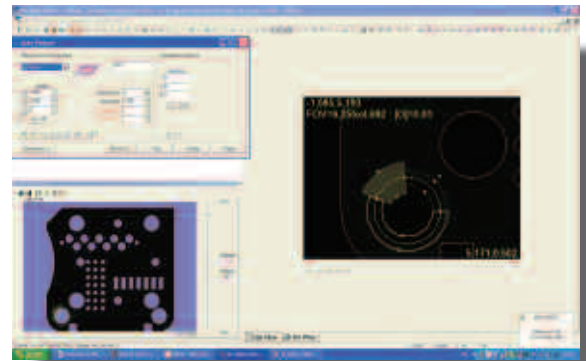
PC-DMIS Vision brings CAD to Vision Metrology

Using PC-DMIS Vision CAD-based inspection software, you can:

- Work directly on a 3D CAD model to develop, debug and edit vision inspection programs. Improve part programming throughput by up to 75%.
- Extract information directly from the model without programmer interaction. Eliminate manual data entry and evaluate measurement results directly against the CAD definitions.
- Develop programs off-line with an optional module that simulates all aspects of the measurement process. Switch between the CAD view and a simulated camera view that accurately depicts what the camera will see as it measures the part.
- Import models and export measurement results in a wide range of industry standard and vendor specific CAD formats.

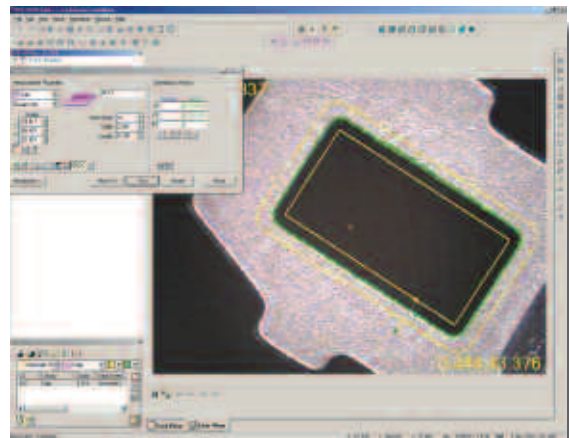
Advanced Metrology Tools

- Edit inspection program by pointing and clicking on part models and cutting and pasting program information. Eliminate the tedium normally associated with vision program editing.
- Automatically adjust critical vision measurement parameters like lighting magnification and image capture using PC-DMIS Vision's unique functions.
- Share programs among multiple vision machines regardless of lighting capabilities. Use programs on both vision and tactile systems with little or no editing.



Flexible control over measurement parameters

- Use manual systems automatically, employing the powerful new Auto-Shutter feature. PC-DMIS Vision will automatically measure every feature within its field of view.
- Reduce training cost and improve measurement throughput by using a single metrology software package on both contact and non-contact measurement machines.
- Teach Mode Execute (TME) function halts program execution when it encounters a problem. Lets user reprogram features on the fly.



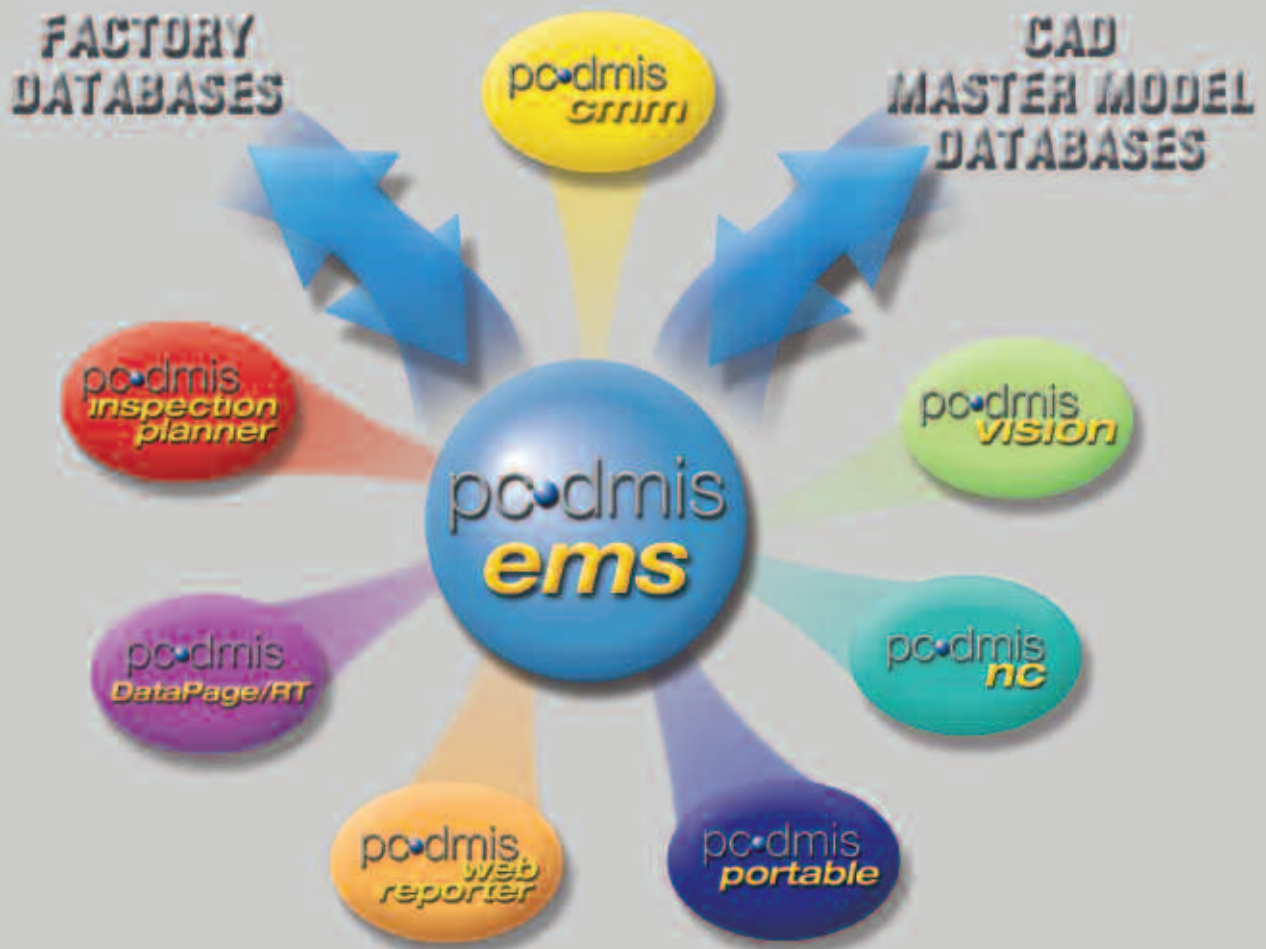
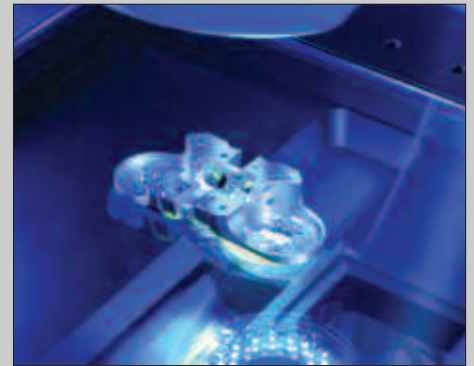
Measure profiles with a single mouse click

Part of a Bigger Picture

PC-DMIS Vision is a key part of Hexagon Metrology's suite of Enterprise Metrology Solutions (EMS), and you get much more than just an excellent measurement package when you buy it.

PC-DMIS Vision and EMS let you:

- Merge vision measurement data with data taken from anywhere within an organization into a consolidated metrology database.
- Build custom reports easily either using EMS's Web Reporter software or any program of your choice. The EMS database is open and conforms to industry standards.
- Mine the database either to find something specific or to try some "what if" experiments
- Monitor key features and dimensions across machines and across operations using any of Hexagon's DataSuite reporting packages or others of your own choosing.





To learn more about Enterprise Metrology Solutions (EMS) and PC-DMIS products, visit www.pcdmis-ems.com.

To learn more about Wilcox Associates, the developers of PC-DMIS, visit www.wilcoxassoc.com.

brown & sharpe
 HEXAGON METROLOGY
www.brownandsharpe.com

DEA
 HEXAGON METROLOGY
www.dea.it

Sheffield
 HEXAGON METROLOGY
www.sheffieldmeasurement.com

HEXAGON METROLOGY 海克斯康
 HEXAGON METROLOGY
brownandsharpe.com.cn

Leica Geosystems
 HEXAGON METROLOGY
www.leicageosystems.com/metrology

Leitz
 HEXAGON METROLOGY
www.leitz-metrology.com

MIRAI
 HEXAGON METROLOGY
www.mirai.it

cimcore
 HEXAGON METROLOGY
www.cimcore.com

ROMER
 HEXAGON METROLOGY
www.romer.com

CE JOHANSSON
 HEXAGON METROLOGY
www.cejohansson.com

TESABS
 HEXAGON METROLOGY
www.tesabs.ch

Wilcox
 HEXAGON METROLOGY
www.wilcoxassoc.com

All Trademarks in this brochure are property of Hexagon AB, its licensees and/or affiliates.

All specifications in this brochure are subject to change without notice.

© 8/2006 Wilcox Associates, Inc. All rights reserved. PN990023.